

INSTRUCTIONS

DO NOT OPERATE THIS MACHINE UNLESS:

- You have read and understand the safety and operating instructions contained in the operator manual and viewed the Moffett Truck-Mounted Forklift Operator Training Video.
- You have been trained in the safe operation of the Moffett Truck-Mounted Forklift.
- You have checked your machine and all functions are operating correctly.

WHEN TRAVELLING WITHOUT A LOAD:

- Keep the fork face in line with the front of the tyres and as low as possible.
- Center the fork carriage using the side-shift function before raising the forks.

WHEN TRAVELLING WITH A LOAD:

- Keep the forks fully retracted and the load as low as possible.
- Make all turning manoeuvres slowly and carefully.
- Do not stop suddenly.
- Travel with the load side-shifted to the center position.

WHEN TRAVELLING ON INCLINES:

- Travel directly up or down, do not travel across an incline.
- Keep the forks facing uphill at all times.
- Engage the diff-lock if operating on slippery slopes.
- Keep the load as low as possible. Do not elevate the load.

WHEN LIFTING A LOAD:

- Check that the stabilizers are fully lowered on a firm and stable surface.
- Do not raise the stabilizers unless the forks are fully retracted.

WHEN PLACING A LOAD:

- Do not extend the forks forward unless the stabilizers are fully lowered on a firm and stable surface.

WHEN MOUNTING FOR TRANSPORT:

- Check that the forks are fully engaged and centered in the mounting kit before raising the forklift.

MOUNTING INSTRUCTIONS

TO MOUNT THE MACHINE ON A TRUCK/TRAILER

- Approach the truck/trailer with the mast extended fully.
- Locate the forks between the fork supports.
- Drive into truck/trailer fully.



1



4

- Retract the mast fully to move the forklift forward into the mounting kit.
- Turn off the engine.

- Tilt the mast rearward fully to raise the rear wheel.



2



5

- Dismount using the 3-point contact method.
- Connect the transport chains.

- Push and hold the lower and go button.

- or
- Climb aboard, cycle the tilt and lift control levers to release the hydraulic pressure.

- Make sure both transport chains are tight.
- Connect suzie cable and check all lights.

- Raise the machine by lowering the forks.



3



6

TO DISMOUNT THE MACHINE FROM A TRUCK/TRAILER

- Disconnect the suzie cable.
- Start the engine.
- Raise the machine and tilt the mast rearward.
- Turn off the engine.



1



4

- Tilt the mast forward until the rear wheel touches the ground.

- Remove the transport chains.
- Fasten the seat belt.
- Extend the mast slowly forward to move the forklift backwards out of the mounting kit.



2



5

- Raise the forks slightly to pressurize the lift cylinder and clear the fork brace

- Raise the forks to lower the forklift to the ground.



3



6

- Back up slowly until the forks are clear of the mounting kit.
- Lower the forks as low as possible.

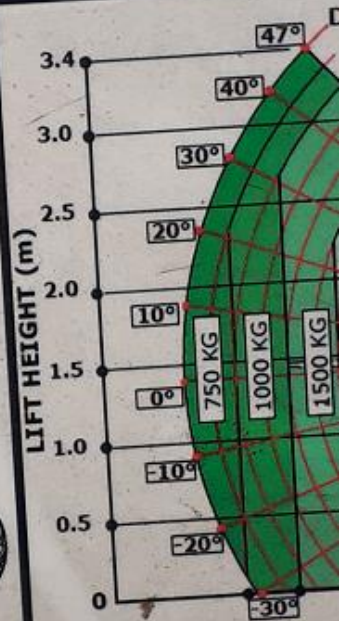
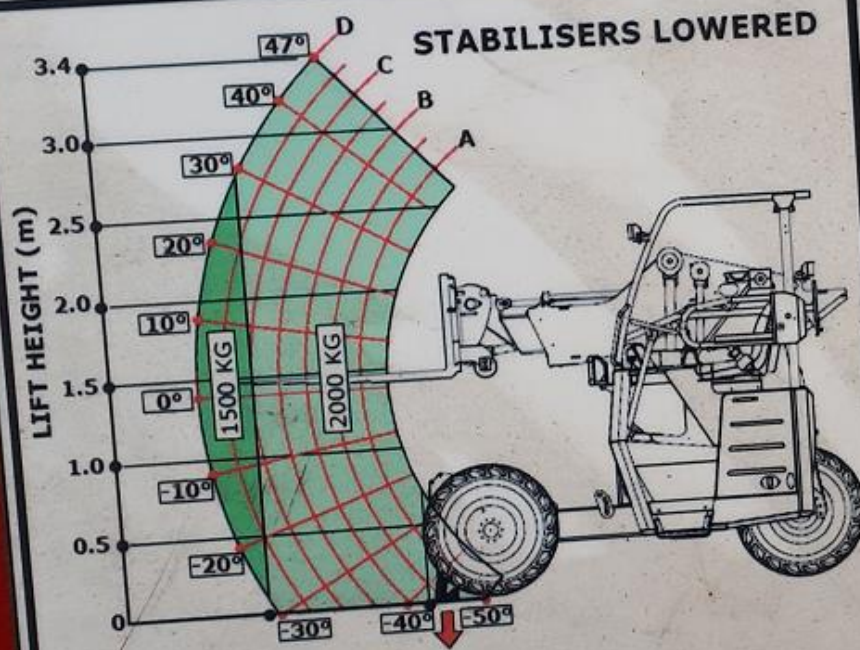
- NOTE:**
- ALWAYS USE THE 3-POINT CONTACT METHOD WHEN ENTERING OR EXITING THE OPERATOR STATION.
 - ENSURE THE PARKING BRAKE IS DISENGAGED IN TRANSPORT.
 - ALWAYS CLOSE THE SIDE GUARD AFTER EXITING THE OPERATOR STATION.
 - ENSURE THE FOLDING DOT BUMPER IS EXTENDED AND PINNED ON BOTH SIDES WHEN THE MACHINE IS NOT MOUNTED.



517.100.0085

THIS MACHINE IS PROTECTED

M10 20.3/20.4 (1145mm Boom) STACKING C
@600mm LOAD CENTRE (1.2m CUBE) ON A FIRM
 COMPLIES WITH BS EN 1459:1999



M5 20.3 / M5 20.4 STACKING CAPACITY
@ 600mm LOAD CENTRE (1.2m CUBE) ON A FIRM LEVEL SURFACE
 COMPLIES WITH ISO 3184:1998

517 120 0003

